

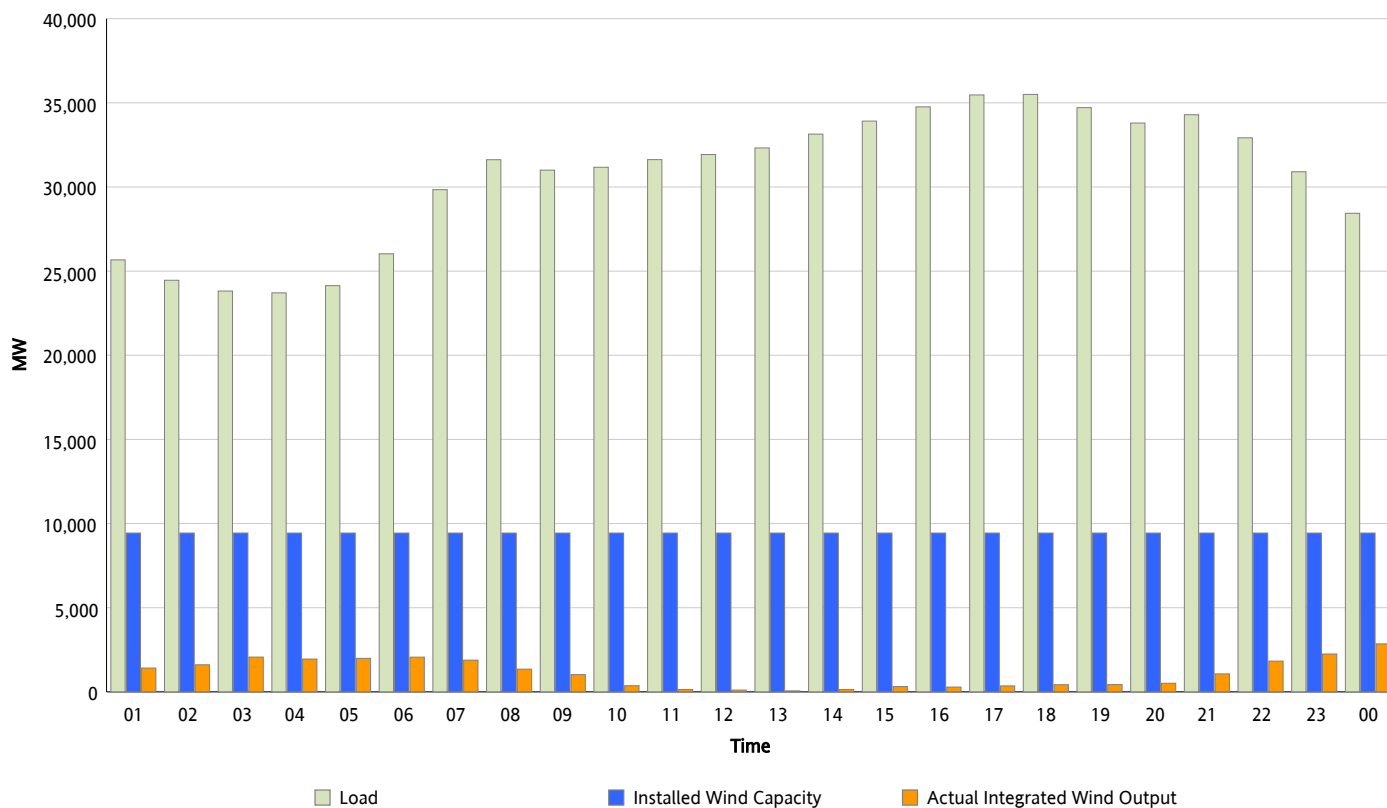


## ERCOT Grid Operations

### Wind Integration Report : 03/23/2012

Peak Load	35,501 MW
Load Peak Hour (HE)	18
Wind Over Peak	425 MW
Wind Record 03/18/12	7,917 MW
Max Wind Value*	3,169 MW
Wind Peak Time	23:59
Wind Integration %	11.6 %

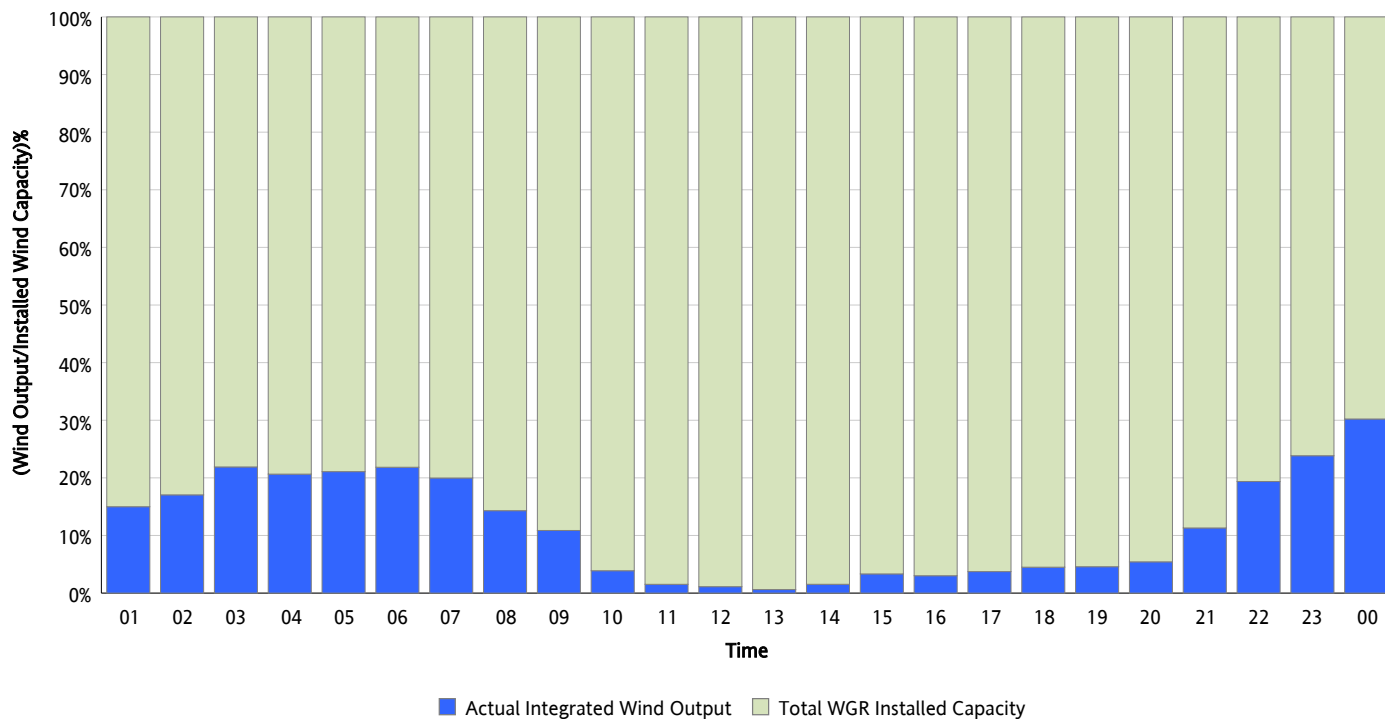
**Hourly Average Actual Load vs. Actual Wind Output**  
**03/23/2012**



\* Wind Record and Wind Max represent instantaneous values and the rest of the values are integrated over the hour

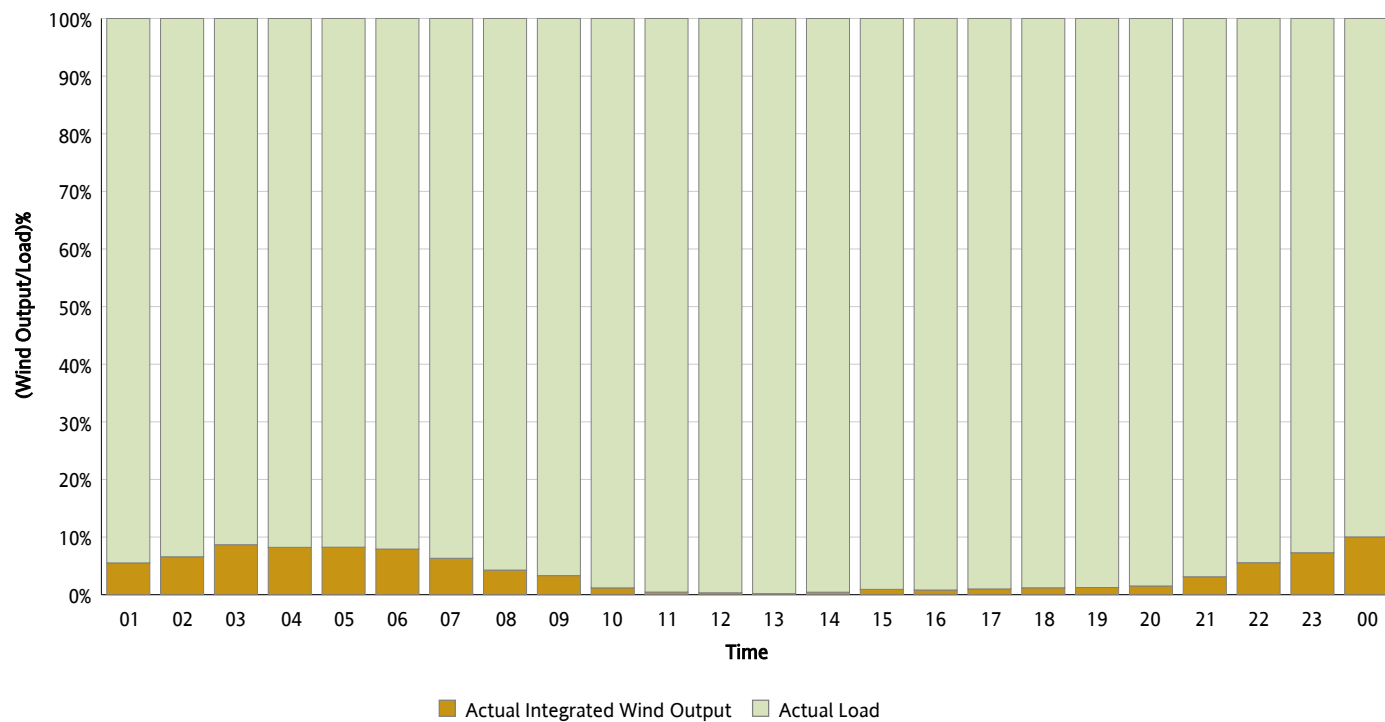
## Actual Wind Output as a Percentage of the Total Installed Wind Capacity

03/23/2012



## Actual Wind Output as a Percentage of the ERCOT Load

03/23/2012



## ERCOT Load vs. Actual Wind Output

03/16/2012 - 03/23/2012

